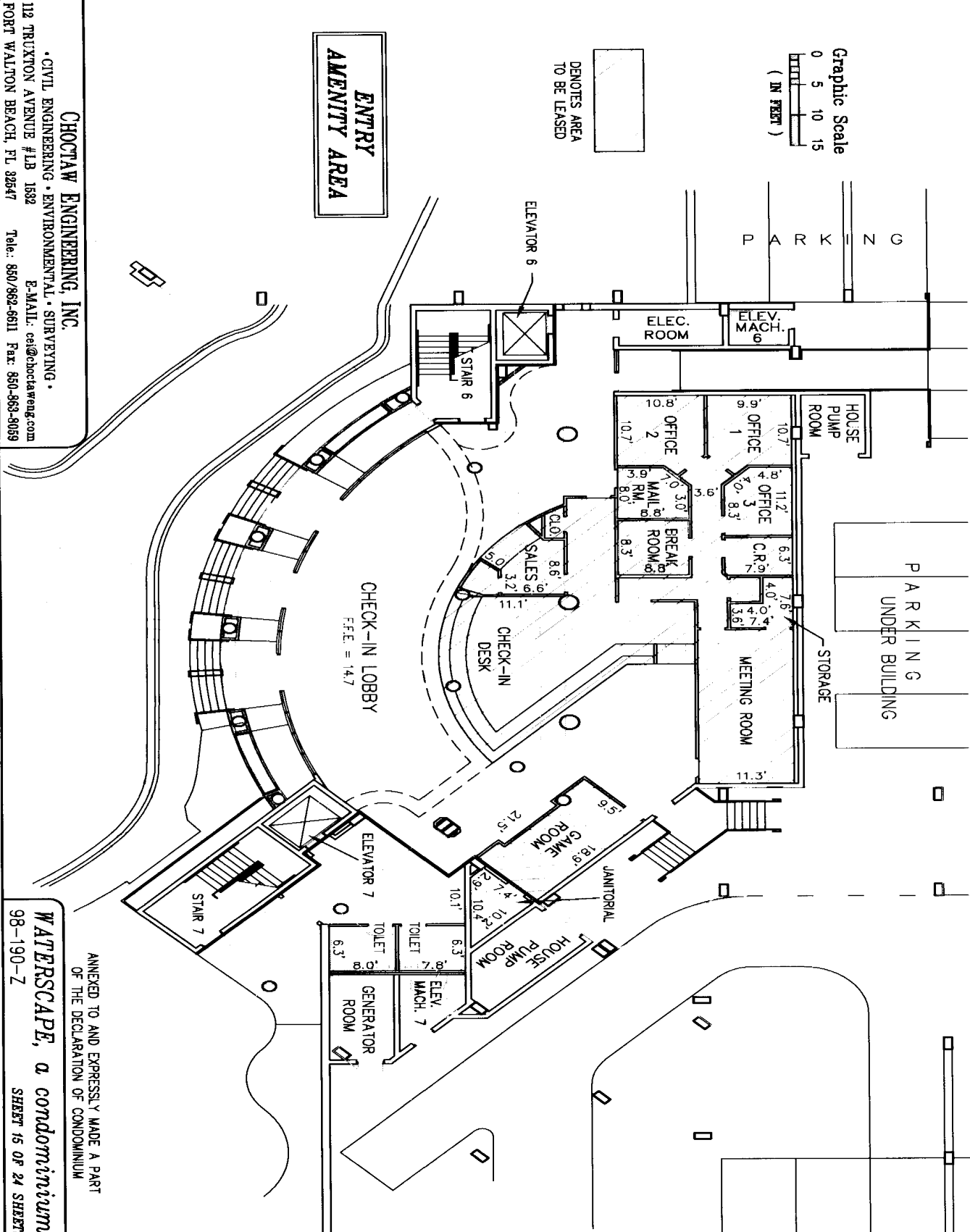


JANUARY 2007

[FILE: 98190Z-CD]

WATERSCAPE, a condominium

IN UNSECTIONED TOWNSHIP 2 SOUTH, RANGE 24 WEST, OKALOOSA COUNTY, FLORIDA



Graphic Scale
0 5 10 15
(IN FEET)

DENOTES AREA
TO BE LEASED

ENTRY
AMENITY AREA

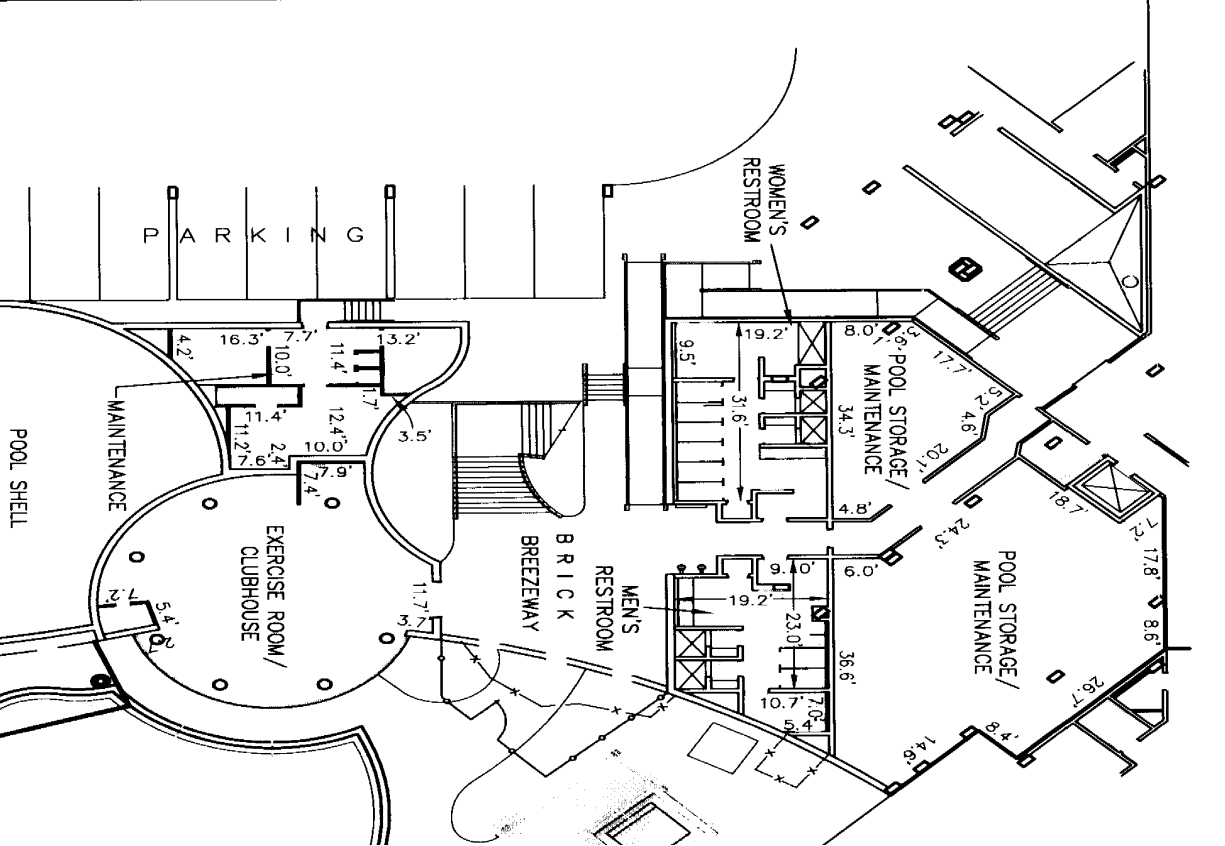
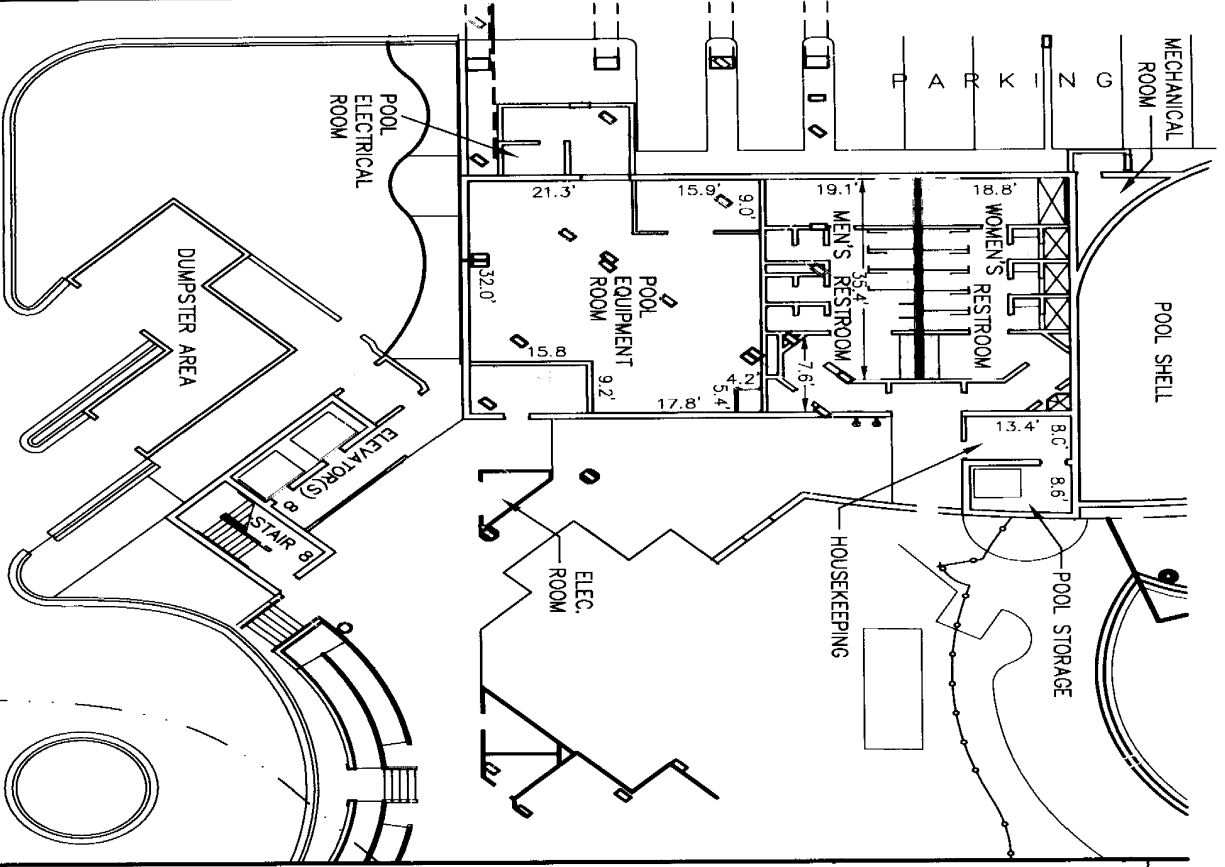
CHOCTAW ENGINEERING, INC.
• CIVIL ENGINEERING • ENVIRONMENTAL • SURVEYING •
112 TRUXTON AVENUE #LB 1682
PORT WALTON BEACH, FL 32847
E-MAIL: ce@choctaweng.com
Tel.: 850/982-6611 Fax: 850-563-5039

ANNEXED TO AND EXPRESSLY MADE A PART
OF THE DECLARATION OF CONDOMINIUM
WATERSCAPE, a condominium
98-190-Z SHEET 15 OF 24 SHEETS

JANUARY 2007

[FILE: 98190Z--CD]

WATERSCAPE, a condominium
 IN UNSECTIONED TOWNSHIP 2 SOUTH, RANGE 24 WEST, OKALOOSA COUNTY, FLORIDA



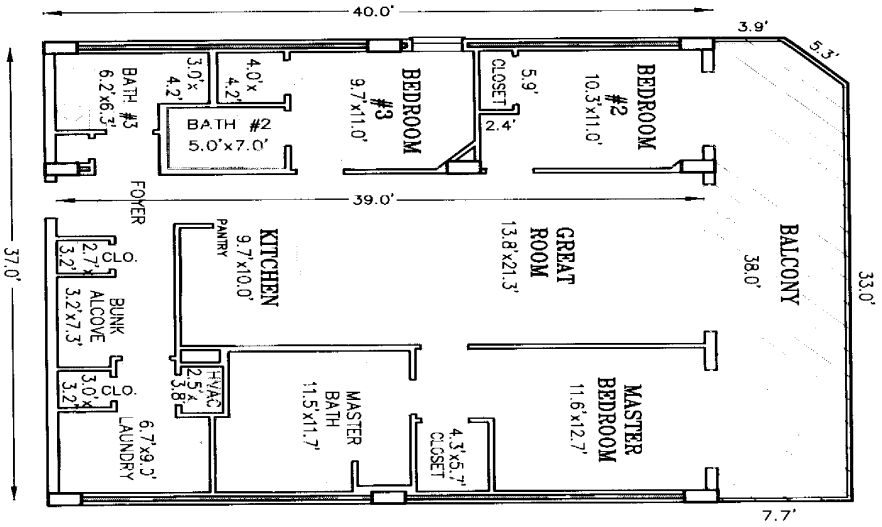
CHOCTAW ENGINEERING, INC.
 • CIVIL ENGINEERING • ENVIRONMENTAL • SURVEYING •
 112 TRUXTON AVENUE #LB 1892
 FORT WALTON BEACH FL 32847
 E-MAIL: cei@choctaweng.com
 Tele: 850/962-6611 Fax: 850-963-9059

'INTERIOR' AMENITY AREAS

ANNEXED TO AND EXPRESSLY MADE A PART
 OF THE DECLARATION OF CONDOMINIUM
WATERSCAPE, a condominium
 98-190-Z
 SHEET 16 OF 24 SHEETS

WATERSCAPE, a condominium

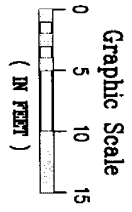
IN UNSECTIONED TOWNSHIP 2 SOUTH, RANGE 24 WEST, OKALOOSA COUNTY, FLORIDA



Unit 'A1' Plan

UNITS: B102, B202, B302,
B402, B502, & B602

Heated area: 1,517 sq. ft.
Balcony area: 289 sq. ft.
Total area: 1,806 sq. ft.



Unit 'A1.1' Plan

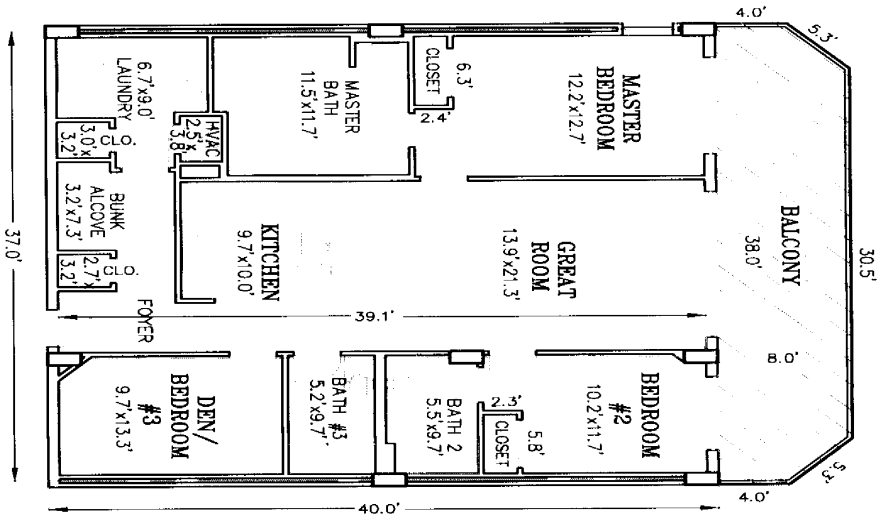
UNITS: A101, A201, A301, A401,
A501, A601; MIRRORED: B101,
B201, B301, B401, B501, & B601

Heated area: 1,514 sq. ft.
Balcony area: 289 sq. ft.
Total area: 1,803 sq. ft.

NOTE

UNIT AND BALCONY SQUARE FOOTAGES ARE APPROXIMATE AND ARE CALCULATED TO THE OUTSIDE SURFACE OF PERIMETER WALLS AND THE CENTERLINE OF COMMON WALLS WHICH DOES NOT ALTER THE ACTUAL UNIT BOUNDARIES WHICH ARE SET FORTH IN ARTICLE 4 OF THIS DECLARATION. ROOM DIMENSIONS ARE SHOWN TO THE UNDECORATED AND/OR UNFINISHED INNER SURFACES OF THE ROOM WALLS AND ROUNDED TO THE NEAREST TENTH OF A FOOT.

BALCONIES ARE LIMITED COMMON ELEMENTS



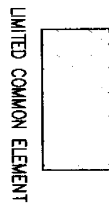
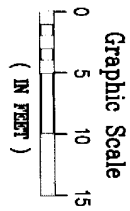
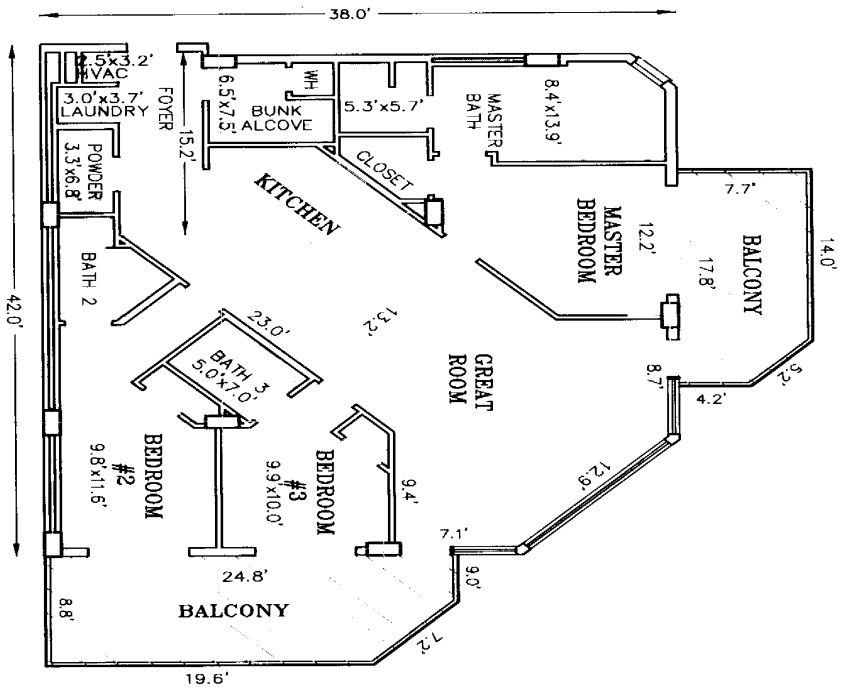
CHOCTAW ENGINEERING, INC.
• CIVIL ENGINEERING • ENVIRONMENTAL • SURVEYING •
112 TRUXTON AVENUE #LB 1682
FORT WALTON BEACH, FL 32547
E-MAIL: ce@choctaweng.com
Tel: 850/862-6611 Fax: 850-663-8059

ANNEXED TO AND EXPRESSLY MADE A PART
OF THE DECLARATION OF CONDOMINIUM

WATERSCAPE, a condominium
98-190-2
SHEET 17 OF 24 SHEETS

WATERSCAPE, a condominium

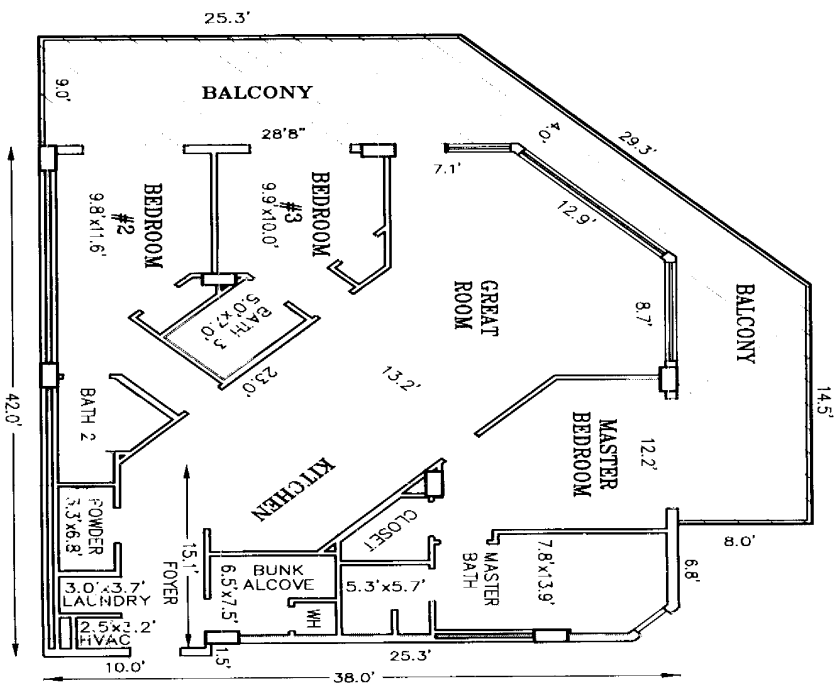
IN UNSECTIONED TOWNSHIP 2 SOUTH, RANGE 24 WEST, OKALOOSA COUNTY, FLORIDA



Unit 'A2' Plan

UNITS: A100, A200, A300,
A400, A500, & A600

Heated area: 1,509 sq. ft.
Balcony area: 346 sq. ft.
Total area: 1,855 sq. ft.



Unit 'A2.1' Plan

UNITS: B100, B200, B300,
B400, B500, & B600

Heated area: 1,507 sq. ft.
Balcony area: 495 sq. ft.
Total area: 2,002 sq. ft.

NOTE

UNIT AND BALCONY SQUARE FOOTAGES ARE APPROXIMATE AND ARE CALCULATED TO THE OUTSIDE SURFACE OF PERIMETER WALLS AND THE CENTERLINE OF COMMON WALLS WHICH DOES NOT ALTER THE ACTUAL UNIT BOUNDARIES WHICH ARE SET FORTH IN ARTICLE 4 OF THIS DECLARATION. ROOM DIMENSIONS ARE SHOWN TO THE UNDECORATED AND/OR UNFINISHED INNER SURFACES OF THE ROOM WALLS AND ROUNDED TO THE NEAREST TENTH OF A FOOT.

BALCONIES ARE LIMITED COMMON ELEMENTS

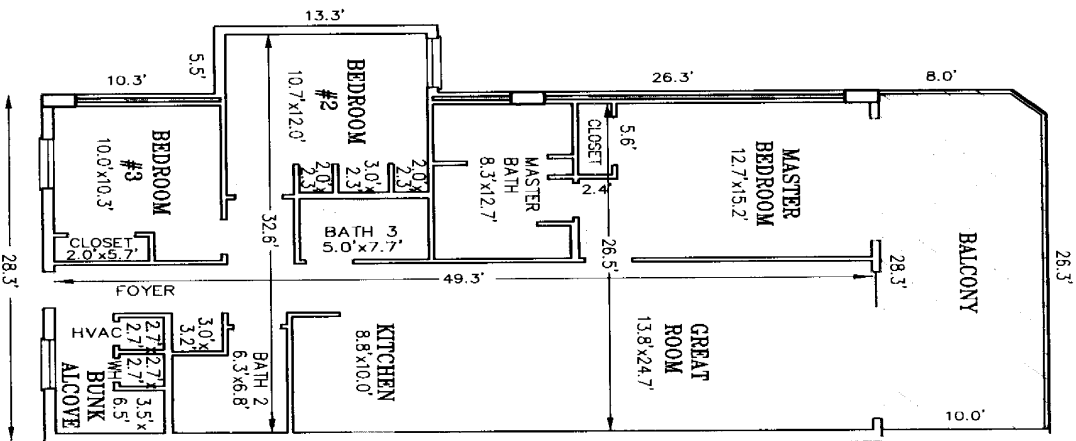
CHOCTAW ENGINEERING, INC.
• CIVIL ENGINEERING • ENVIRONMENTAL • SURVEYING •
112 TRUKXTON AVENUE #1B 1532
FORT WALTON BEACH, FL 32947
E-MAIL: ce@choctaweng.com
Tel: 850/862-6611 Fax: 850-863-8069

ANNEXED TO AND EXPRESSLY MADE A PART
OF THE DECLARATION OF CONDOMINIUM

WATERSCAPE, a condominium
98-190-Z
SHEET 18 OF 24 SHEETS

WATERSCAPE, a condominium

IN UNSECTIONED TOWNSHIP 2 SOUTH, RANGE 24 WEST, OKALOOSA COUNTY, FLORIDA

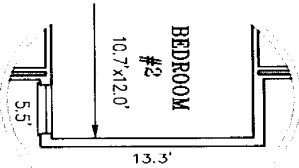


Unit 'A3' Plan

UNITS: C200, C300, C400, C500, C600; *MIRRORED: C306, C406, C506, & C606

Heated area: 1,490 sq. ft.
Balcony area: 276 sq. ft.
Total area: 1,766 sq. ft.

*Mirrored units window variation: C306, C406, C506, & C606



NOTE

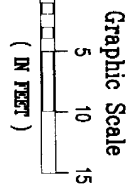
UNIT AND BALCONY SQUARE FOOTAGES ARE APPROXIMATE AND ARE CALCULATED TO THE OUTSIDE SURFACE OF PERIMETER WALLS AND THE CENTERLINE OF COMMON WALLS WHICH DOES NOT ALTER THE ACTUAL UNIT BOUNDARIES WHICH ARE SET FORTH IN ARTICLE 4 OF THIS DECLARATION. ROOM DIMENSIONS ARE SHOWN TO THE UNDECORATED AND/OR UNFINISHED INNER SURFACES OF THE ROOM WALLS AND ROUNDED TO THE NEAREST TENTH OF A FOOT.

BALCONIES ARE LIMITED COMMON ELEMENTS
ADA = AMERICAN DISABILITIES ACT COMPLIANT

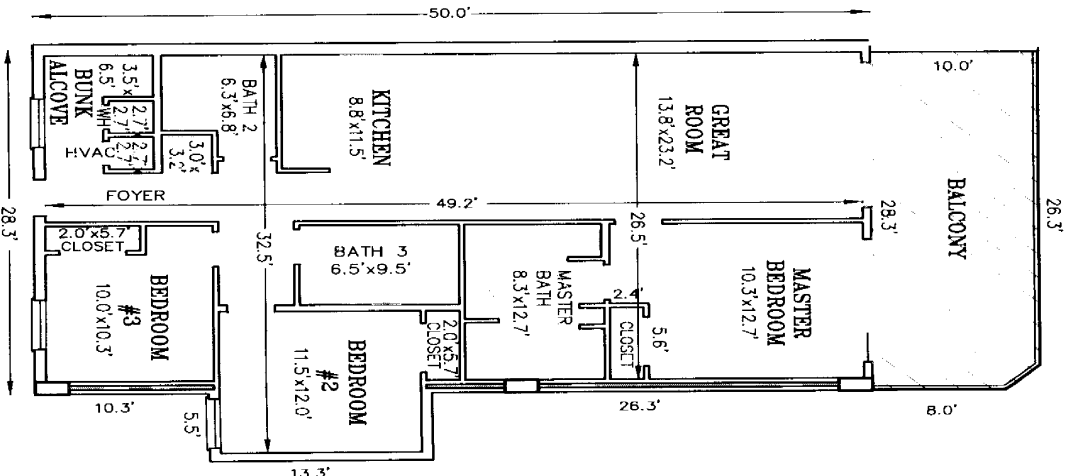
Unit 'A3-ADA' Plan

UNIT: C206

Heated area: 1,490 sq. ft.
Balcony area: 276 sq. ft.
Total area: 1,766 sq. ft.



LIMITED COMMON ELEMENT



CHOCTAW ENGINEERING, INC.
• CIVIL ENGINEERING • ENVIRONMENTAL • SURVEYING •
112 TRUXTON AVENUE #LB 1832
FORT WALTON BEACH, FL 32647
E-MAIL: ce@choctaweng.com
Tel: 850-862-5611 Fax: 850-862-8059

ANNEXED TO AND EXPRESSLY MADE A PART
OF THE DECLARATION OF CONDOMINIUM
WATERSCAPE, a condominium
SHEET 19 OF 24 SHEETS
98-190-Z

JANUARY 2007 [FILE: 98190Z-CD]

WATERSCAPE, a condominium

IN UNSECTIONED TOWNSHIP 2 SOUTH, RANGE 24 WEST, OKALOOSA COUNTY, FLORIDA

Unit 'B1' Plan

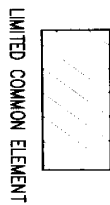
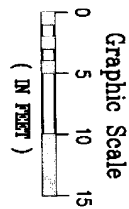
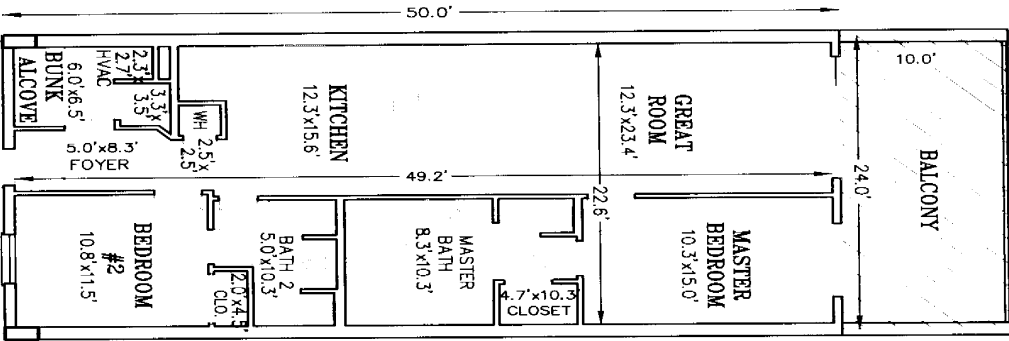
UNITS: C201, C203, C204, C301, C401, C501, C601, C302, C402, C502, C602, C303, C403, C503, C603, C304, C404, C504, C604, C405, C505, C605; MIRRORED: C205 & C305

Heated area:	1,200 sq. ft.
Balcony area:	230 sq. ft.
Total area:	1,430 sq. ft.

NOTE

UNIT AND BALCONY SQUARE FOOTAGES ARE APPROXIMATE AND ARE CALCULATED TO THE OUTSIDE SURFACE OF PERIMETER WALLS AND THE CENTERLINE OF COMMON WALLS WHICH DOES NOT ALTER THE ACTUAL UNIT BOUNDARIES WHICH ARE SET FORTH FORTH IN ARTICLE 4 OF THIS DECLARATION. ROOM DIMENSIONS ARE SHOWN TO THE UNDECORATED AND/OR UNFINISHED INNER SURFACES OF THE ROOM WALLS AND ROUNDED TO THE NEAREST TENTH OF A FOOT.

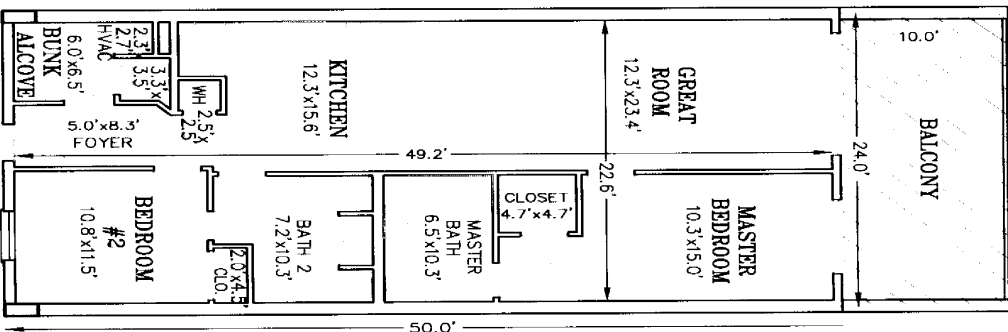
BALCONIES ARE LIMITED COMMON ELEMENTS
ADA = AMERICAN DISABILITIES ACT COMPLIANT



Unit 'B1-ADA' Plan

UNIT: C202

Heated area:	1,205 sq. ft.
Balcony area:	230 sq. ft.
Total area:	1,435 sq. ft.



CHOCTAW ENGINEERING, INC.
 • CIVIL ENGINEERING • ENVIRONMENTAL • SURVEYING •
 112 TRUXTON AVENUE #LB 1682
 FORT WALTON BEACH, FL 32547
 E-MAIL: ce@choctaweng.com
 Tele: 850/862-6611 Fax: 850-868-8059

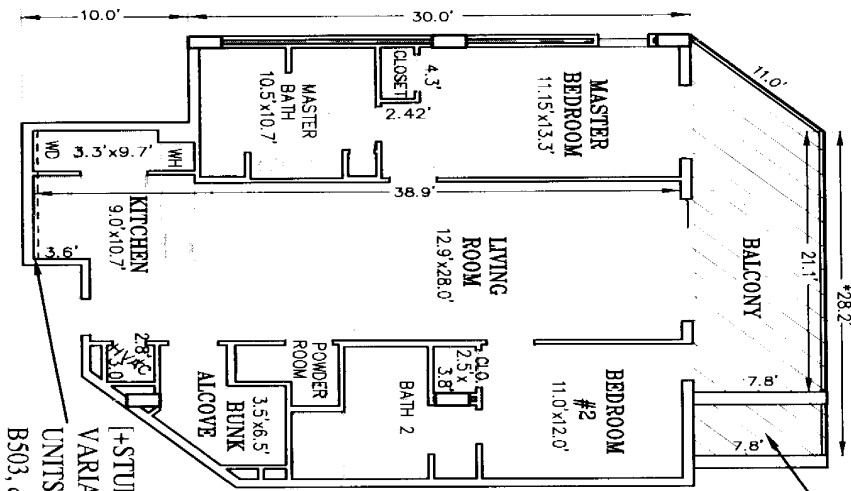
WATERSCAPE, a condominium
 98-190-7
 SHEET 20 OF 24 SHEET

ANNEXED TO AND EXPRESSLY MADE A PART OF THE DECLARATION OF CONDOMINIUM

WATERSCAPE, a condominium

IN UNSECTIONED TOWNSHIP 2 SOUTH, RANGE 24 WEST, OKALOOSA COUNTY, FLORIDA

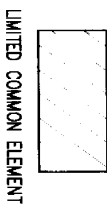
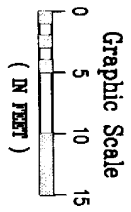
B2 PLAN UNITS: A103*, A203*, A303*, A403*, A503*, A603*, A105, A205, A305, A405, A505, A605, A107, A207, A307, A407, A507, A607, A109, A209, A309, A409, A509, A609, A111, A211, A311, A411, A511, A611, A113, A213, A313, A413, A513, A613, A215, A315, A415, A515, A615, A117, A317, A417, A517, A617, A119, A219, A319, A419, A519, A619, A121, A221, A321, A421, A521, A123, A223, A323, A423, A523, A623, A125, A225, A325, A425, A525, A625, A127, A227, A427, A527, A627, A129, A229, A329, A429, A529, A629, A131, A231, A331, A431, A531, A631, A233, A333, A433, A533, A633, A135, A235, A335, A435, A535, A635, B108, B208, B308, B408, B508, B608, B110, B210, B310, B410, B510, B610, B112, B212, B312, B412, B512, B612, B214, B314, B414, B514, & B614; MIRRORED PLAN UNITS: A102*, A202*, A302*, A402*, A502*, A602*, A104, A204, A304, A404, A504, A604, A106, A206, A306, A406, A506, A606, A108, A208, A308, A408, A508, A608, A210, A1310, A410, A510, A610, A112, A212, A312, A412, A512, A612, A214, A314, A414, A514, A614, A216, A316, A416, A516, & A616;
 B2-E9 PLAN UNITS, MIRRORED: B103*+, B203*+, B303*+, B403*+, B503*+, & B603*+



[*]long BALCONY VARIATION IN UNITS: A102, A202, A302, A402, A502, A602, A103, A203, A303, A403, A503, A603, B103, B203, B303, B403, B503, B603]

Unit 'B2' Plan Unit 'B2-E9' Plan

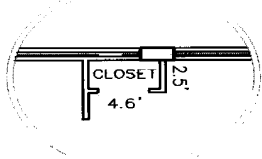
	(Short 'balc.)	(*]long' balc.)
Heated area:	1,291 sq. ft.	1,291 sq. ft.
Balcony area:	202 sq. ft.	247 sq. ft.
Total area:	1,493 sq. ft.	1,538 sq. ft.



[+STUD WALL ADDITION/
VARIATION IN (MIRRORED)
UNITS: B103, B203, B303, B403,
B503, & B603]

*Unit: A115

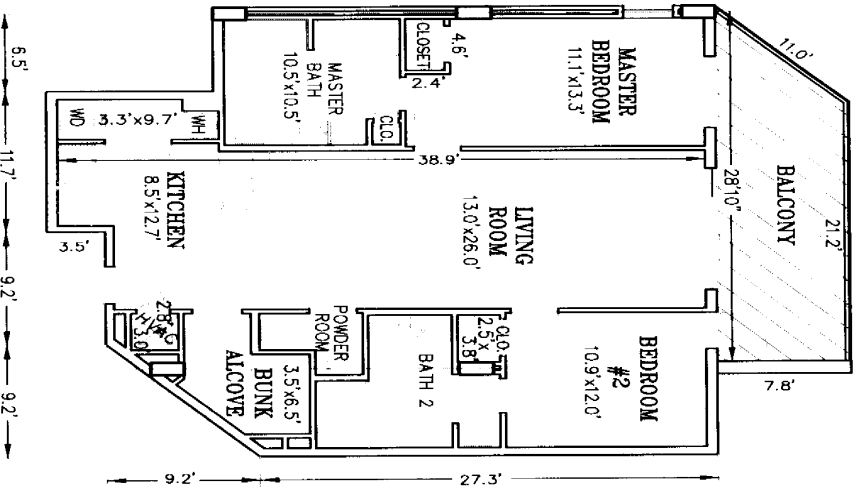
(Master closet variation)



Unit 'B2-ADA' Plan

UNITS: *A115, A133, A217, A621,
& A327; MIRRORED: A110

	Heated area:	Balcony area:	Total area:
	1,289 sq. ft.	193 sq. ft.	1,482 sq. ft.



NOTE
 UNIT AND BALCONY SQUARE FOOTAGES ARE APPROXIMATE AND ARE CALCULATED TO THE OUTSIDE SURFACE OF PERIMETER WALLS AND THE CENTRELINE OF COMMON WALLS WHICH DOES NOT ALTER THE ACTUAL UNIT BOUNDARIES WHICH ARE SET FORTH IN ARTICLE 4 OF THIS DECLARATION. ROOM DIMENSIONS ARE SHOWN TO THE UNDECORATED AND/OR UNFINISHED INNER SURFACES OF THE ROOM WALLS AND ROUNDED TO THE NEAREST TENTH OF A FOOT.
 BALCONIES ARE LIMITED COMMON ELEMENTS
 ADA = AMERICAN DISABILITIES ACT COMPLIANT

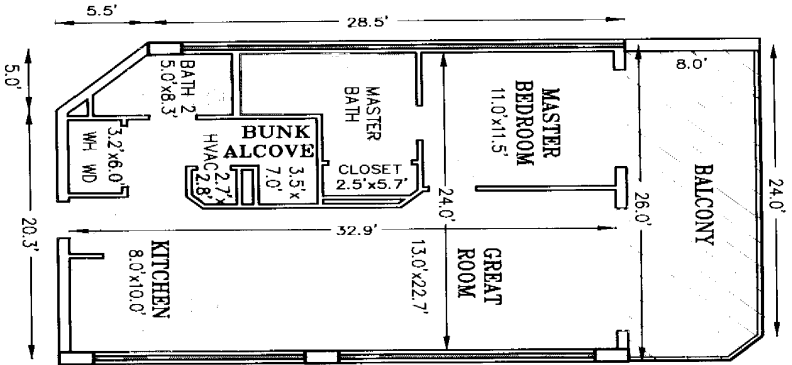
CHOCTAW ENGINEERING, INC.
 • CIVIL ENGINEERING • ENVIRONMENTAL • SURVEYING •
 112 TRUXTON AVENUE #1B 1532
 FORT WALTON BEACH, FL 32547
 E-MAIL: ce@choctaweng.com
 Tel.: 850-862-6611 Fax: 850-869-8059

ANNEXED TO AND EXPRESSLY MADE A PART
 OF THE DECLARATION OF CONDOMINIUM

WATERSCAPE, a condominium
 98-190-Z
 SHEET 21 OF 24 SHEETS

WATERSCAPE, a condominium

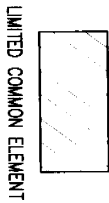
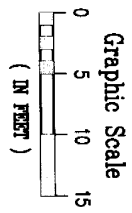
IN UNSECTIONED TOWNSHIP 2 SOUTH, RANGE 24 WEST, OKALOOSA COUNTY, FLORIDA



Unit 'C1-ADA' Plan

UNITS: A224, A226 & A230

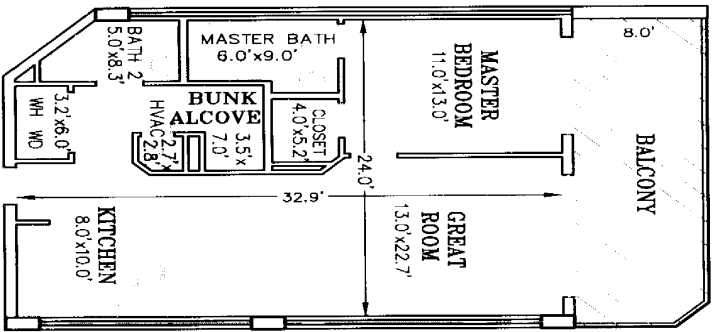
Heated area:	873 sq. ft.
Balcony area:	201 sq. ft.
Total area:	1,074 sq. ft.



NOTE

UNIT AND BALCONY SQUARE FOOTAGES ARE APPROXIMATE AND ARE CALCULATED TO THE OUTSIDE SURFACE OF PERIMETER WALLS AND THE CENTERLINE OF COMMON WALLS WHICH DOES NOT ALTER THE ACTUAL UNIT BOUNDARIES WHICH ARE SET FORTH FOR IN ARTICLE 4 OF THIS DECLARATION. ROOM DIMENSIONS ARE SHOWN TO THE UNDECORATED AND/OR UNFINISHED INNER SURFACES OF THE ROOM WALLS AND ROUNDED TO THE NEAREST TENTH OF A FOOT.

BALCONIES ARE LIMITED COMMON ELEMENTS
ADA = AMERICAN DISABILITIES ACT COMPLIANT

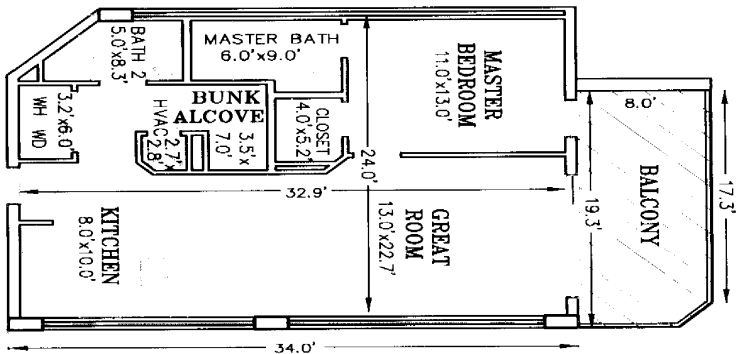


Unit 'C1' Plan

UNITS: A220, A222, A228,

A320, A420, A520, A620, A322, A422, A522, A622, A324, A424, A524, A624, A326, A426, A526, A626, A328, A428, A528, A628, A330, A430, A530, & A630

Heated area:	870 sq. ft.
Balcony area:	201 sq. ft.
Total area:	1,071 sq. ft.



Unit 'C1.1' Plan

UNITS: A318, A418, A518, & A618

Heated area:	868 sq. ft.
Balcony area:	153 sq. ft.
Total area:	1,021 sq. ft.

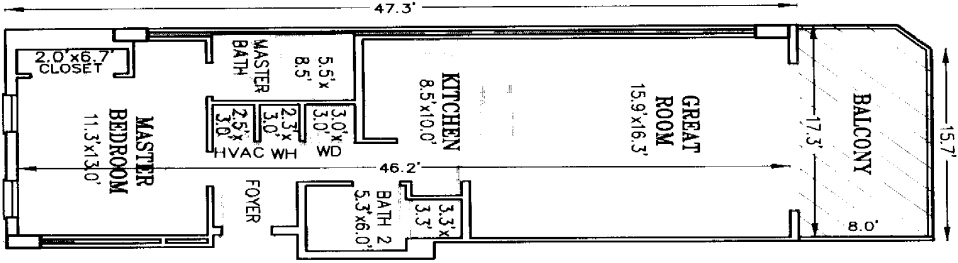
ANNEXED TO AND EXPRESSLY MADE A PART OF THE DECLARATION OF CONDOMINIUM

CHOCTAW ENGINEERING, INC.
 • CIVIL ENGINEERING • ENVIRONMENTAL • SURVEYING •
 112 TRUXTON AVENUE #LB 1582
 FORT WALTON BEACH, FL 32547
 E-MAIL: ce@choctaweng.com
 Tele: 850/562-6511 Fax: 850-863-8069

WATERSCAPE, a condominium
 SHEET 23 OF 24 SHEET
 98-190-Z

WATERSCAPE, a condominium

IN UNSECTIONED TOWNSHIP 2 SOUTH, RANGE 24 WEST, OKALOOSA COUNTY, FLORIDA



Unit 'C2' Plan

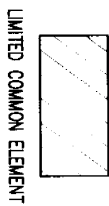
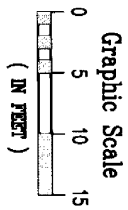
- UNITS: B316, B516, B616, B318, B418, B518, B618, B220, B320, B420, B520, B620, B222, B322, B422, B522, B622, B324, B424, B524, B624, B226, B326, B426, B526, B626, B228, B328, B428, B628, B230, B330, B430, B530, & B630

Heated area:	827 sq. ft.
Balcony area:	137 sq. ft.
Total area:	964 sq. ft.

NOTE

UNIT AND BALCONY SQUARE FOOTAGES ARE APPROXIMATE AND ARE CALCULATED TO THE OUTSIDE SURFACE OF PERIMETER WALLS AND THE CENTERLINE OF COMMON WALLS WHICH DOES NOT ALTER THE ACTUAL UNIT BOUNDARIES WHICH ARE SET FORTH IN ARTICLE 4 OF THIS DECLARATION. ROOM DIMENSIONS ARE SHOWN TO THE UNDECORATED AND/OR UNFINISHED INNER SURFACES OF THE ROOM WALLS AND ROUNDED TO THE NEAREST TENTH OF A FOOT.

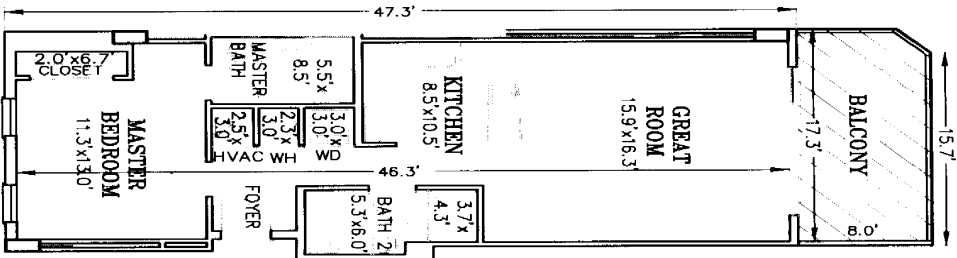
BALCONIES ARE LIMITED COMMON ELEMENTS
 ADA = AMERICAN DISABILITIES ACT COMPLIANT



Unit 'C2-ADA' Plan

- UNITS: B218, B224, B416, & B528

Heated area:	827 sq. ft.
Balcony area:	137 sq. ft.
Total area:	964 sq. ft.



CHOCTAW ENGINEERING, INC.
 • CIVIL ENGINEERING • ENVIRONMENTAL • SURVEYING •
 119 TRUXTON AVENUE #1B 1532
 FORT WALTON BEACH, FL 32947
 E-MAIL: ce@choctaweng.com
 Tel.: 860/862-6611 Fax: 860-868-8069

ANNEXED TO AND EXPRESSLY MADE A PART
 OF THE DECLARATION OF CONDOMINIUM

WATERSCAPE, a condominium
 98-190-Z SHEET 24 OF 24 SHEETS